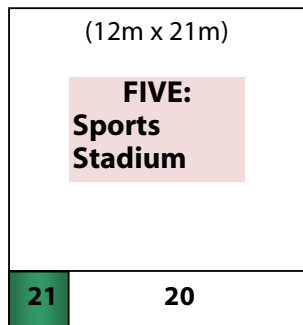




# SRC Building and Bedroom Plans

(not to scale. All buildings set in Landscaped Gardens)

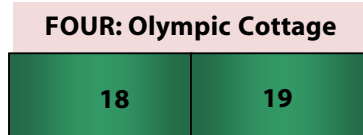
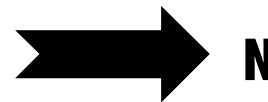
PLEASE PRINT @ 95%



Below 20:

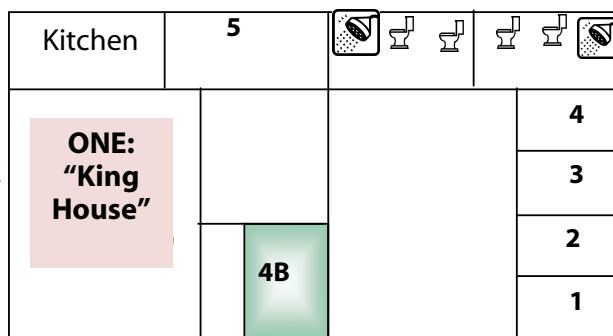
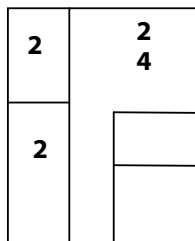
## CODES:

- Showers
- Toilets
- Telephone
- Disabled Showers / Toilets
- Teacher / Leaders Room



"WILDERNESS CAMP"  
Permanent tent site with 10 single beds

**Flight Deck**  
Snowy River staff building



ENTRANCE

## Bedrooms

Room No	No. Persons	Type
1	2	Singles
2	2	Singles
3	2	Singles
4	2	Singles
4B	2	SINGLES/Q
5	5	Singles
6	2	Singles
7	2	Singles
8	2	Singles
9	2	Singles
10	8	Singles
11	4	Singles
12	4	Singles
14	4	Singles
15	2	SINGLES/Q
16	4	Singles
17	4	Singles
18	2	SINGLES/Q
19	2	SINGLES/Q
20	12	Singles
21	2	SINGLES/Q
W/Camp	10	Singles
22 F/D	4	Singles/Doub
23 F/D	4	Singles
24 F/D	4	Singles



**TWO**  
"Safari cottage"

Rooms 4B, 15, 18, 19, 21, can alternate as Lge Queen or two singles.  
**87 beds/persons available... for larger groups we suggest bringing tents.**

**Flight Deck** – we only use this building for larger groups (over 65 persons) as this is the SRC Staff Quarters and we do not like to move them unnecessarily, however group leaders/teachers may request swapping the Flight Deck for the Olympic building.  
N.B. Rooms 15, 18, 19, 21 and 4B are single beds, the rest are bunks.  
Definition: A Bunk bed is a bed fixed to wall.

79 singles without using "flight deck," or 87 singles if swapping SRC staff building "flight deck" for Olympic building. \*NOTE: 5 leaders rooms can be twin or King size beds

**LEADERS ROOMS: will need to bring king size linen if booking King beds**